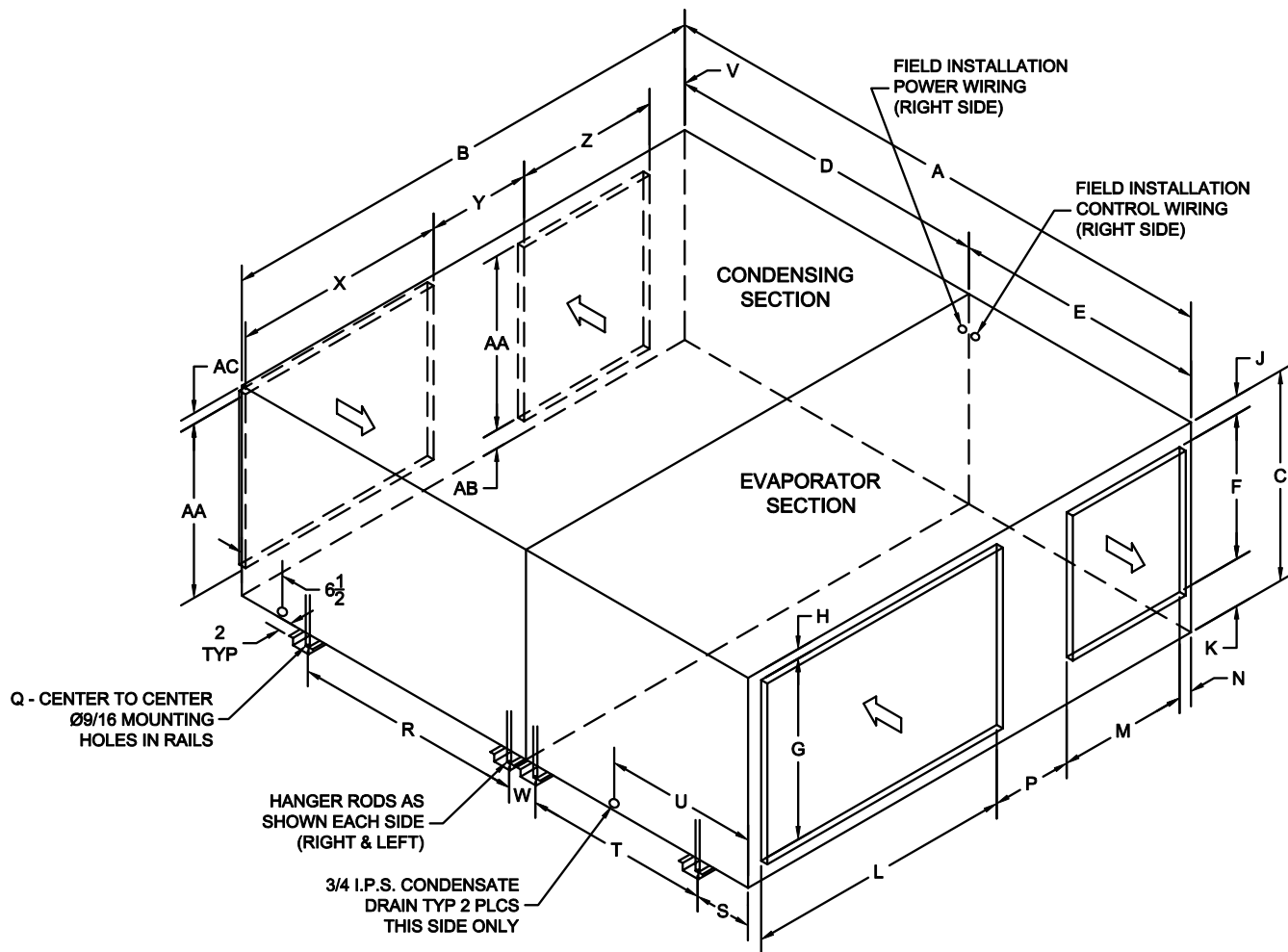




C-Series - Packaged Air-Cooled



TONS	A	B	C	D	E	F	G	H	J	K	L	M	N	P	Q	R	S	T	U	V	W	X	Y	Z	AA	AB	AC
1-1.5	51 ⁵ / ₈	35 ¹⁵ / ₁₆	16	29 ⁹ / ₁₆	22 ¹ / ₁₆	12	12	1 ⁵ / ₁₆	1	3	16 ¹ / ₈	12	4 ¹ / ₁₆	2 ⁵ / ₁₆	37 ⁵ / ₁₆	25 ¹ / ₄	4 ³ / ₄	15 ¹ / ₄	14 ³ / ₄	4 ¹⁵ / ₁₆	4 ¹ / ₈	12	6 ¹ / ₄	12 ¹ / ₁₆	12	2 ³ / ₄	1 ¹ / ₄
2-5	66 ⁵ / ₁₆	47 ³ / ₁₆	22	34 ³ / ₄	31 ⁹ / ₁₆	16	18	1 ⁵ / ₁₆	3 ³ / ₄	5 ¹ / ₄	24	16	3	2 ⁵ / ₁₆	48 ³ / ₄	21 ⁹ / ₁₆	7 ³ / ₈	22 ¹ / ₁₆	20 ³ / ₄	4 ¹¹ / ₁₆	4 ¹ / ₈	16	10	16	16	4 ¹¹ / ₁₆	1 ³ / ₁₆
4-8	71 ³ / ₄	55 ³ / ₁₆	27	40 ³ / ₁₆	31 ³ / ₁₆	18	23	1 ⁵ / ₁₆	3 ⁵ / ₈	5 ³ / ₈	32	16	3	2 ⁵ / ₁₆	56 ³ / ₄	27 ¹ / ₄	7 ⁵ / ₁₆	21 ¹ / ₁₆	20 ¹¹ / ₁₆	3 ¹¹ / ₁₆	4 ¹ / ₁₆	18	15 ¹ / ₁₆	18	20	4 ¹¹ / ₁₆	2 ³ / ₁₆
10-15	80 ³ / ₄	70 ⁵ / ₈	29	45 ⁵ / ₁₆	35 ⁷ / ₁₆	20	25	1 ⁵ / ₁₆	2 ¹ / ₂	6 ¹ / ₂	37 ⁹ / ₁₆	18	1 ⁷ / ₈	11 ³ / ₁₆	72 ¹ / ₁₆	32 ¹ / ₈	7 ³ / ₈	25 ⁷ / ₈	21 ⁵ / ₁₆	5 ⁵ / ₈	4 ³ / ₁₆	30	14 ⁷ / ₁₆	20	24	3 ¹ / ₂	1 ¹ / ₂

NOTE: MOUNTING RAIL HEIGHT AND DUCT FLANGE 1" TYP

491 East Princess Street • York, Pennsylvania 17403 • 717-843-4311 • Toll Free 877-905-1111 • fax: 717-854-4462
 www.unitedcoolair.com • uca@unitedcoolair.com

CA11095(A)(1)
03/31/09

Subject to change without notice.