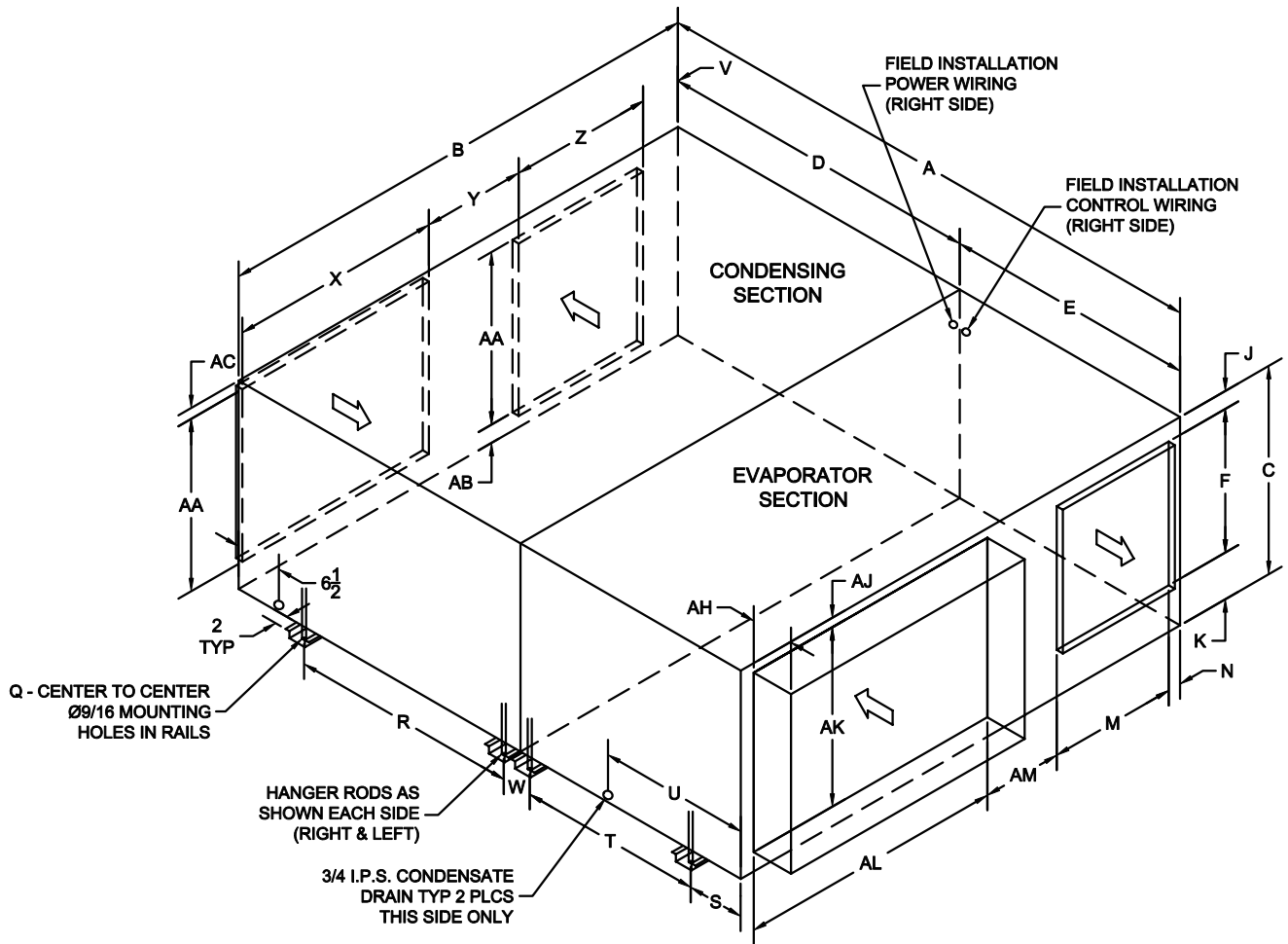




C-Series - Packaged Air-Cooled with External Filter Box



TONS	A	B	C	D	E	F	J	K	M	N	Q	R	S	T	U	V	W	X	Y	Z	AA	AB	AC	AH	AJ	AK	AL	AM
1-1.5	51 $\frac{3}{8}$	35 $\frac{15}{16}$	16	29 $\frac{9}{16}$	22 $\frac{1}{16}$	12	1	3	12	4 $\frac{1}{8}$	37 $\frac{5}{16}$	25 $\frac{1}{4}$	4 $\frac{3}{4}$	15 $\frac{1}{4}$	14 $\frac{3}{4}$	4 $\frac{15}{16}$	4 $\frac{1}{8}$	12	6 $\frac{1}{4}$	12 $\frac{1}{16}$	12	2 $\frac{3}{4}$	1 $\frac{1}{4}$	5	13 $\frac{7}{8}$	13 $\frac{7}{8}$	17 $\frac{3}{4}$	1 $\frac{1}{16}$
2-5	66 $\frac{5}{16}$	47 $\frac{3}{8}$	22	34 $\frac{3}{4}$	31 $\frac{9}{16}$	16	$\frac{3}{4}$	5 $\frac{1}{4}$	16	3	48 $\frac{3}{4}$	21 $\frac{9}{16}$	7 $\frac{3}{8}$	22 $\frac{1}{16}$	20 $\frac{3}{4}$	4 $\frac{11}{16}$	4 $\frac{1}{8}$	16	10	16	16	4 $\frac{11}{16}$	1 $\frac{3}{16}$	6	15 $\frac{15}{16}$	20 $\frac{1}{8}$	24 $\frac{1}{8}$	2 $\frac{3}{16}$
4-8	71 $\frac{3}{4}$	55 $\frac{3}{8}$	27	40 $\frac{3}{8}$	31 $\frac{3}{8}$	18	3 $\frac{5}{8}$	5 $\frac{3}{8}$	16	3	56 $\frac{3}{4}$	27 $\frac{1}{4}$	7 $\frac{5}{16}$	21 $\frac{1}{16}$	20 $\frac{11}{16}$	3 $\frac{11}{16}$	4 $\frac{1}{8}$	18	15 $\frac{1}{16}$	18	20	4 $\frac{11}{16}$	2 $\frac{3}{16}$	6	15 $\frac{15}{16}$	24 $\frac{3}{16}$	32 $\frac{1}{2}$	1 $\frac{13}{16}$
10-15	80 $\frac{3}{4}$	70 $\frac{3}{8}$	29	45 $\frac{5}{16}$	35 $\frac{7}{16}$	20	2 $\frac{1}{2}$	6 $\frac{1}{2}$	18	1 $\frac{7}{8}$	72 $\frac{1}{16}$	32 $\frac{1}{8}$	7 $\frac{3}{8}$	25 $\frac{7}{8}$	21 $\frac{5}{16}$	5 $\frac{5}{8}$	4 $\frac{3}{16}$	30	14 $\frac{7}{16}$	20	24	3 $\frac{1}{2}$	1 $\frac{1}{2}$	6	1 $\frac{3}{16}$	25 $\frac{3}{8}$	40 $\frac{1}{8}$	8 $\frac{11}{16}$

NOTE: MOUNTING RAIL HEIGHT AND DUCT FLANGE 1" TYP