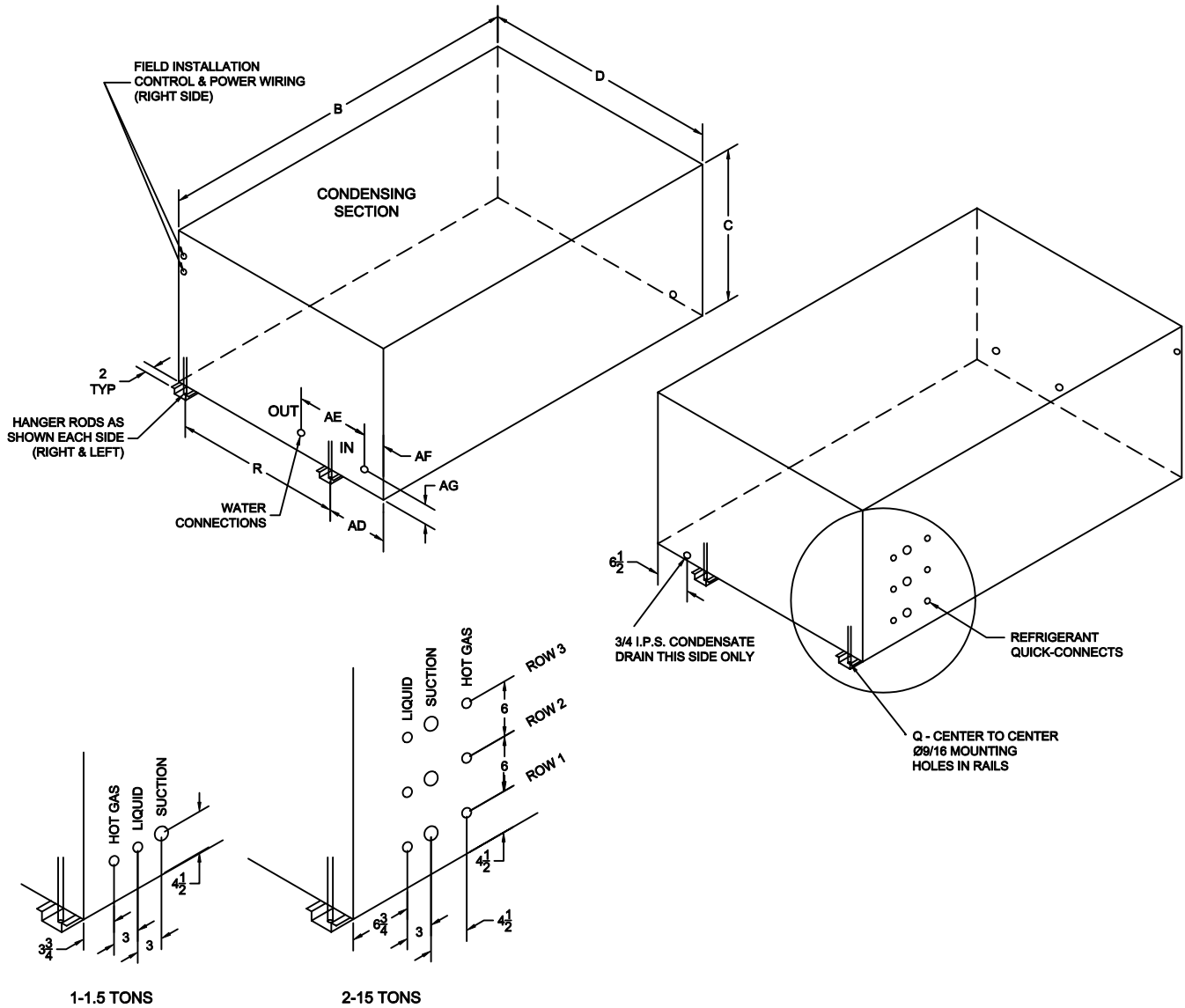


C-Series - Water-Cooled Condenser Assembly



NOTE: MOUNTING RAIL HEIGHT AND DUCT FLANGE 1" TYP

TONS	B	C	D	Q	R	AD	AE	AF	AG	PIPING OUTLET LOCATIONS	WATER PIPING IN & OUT SIZE
1-1.5 SINGLE CIRCUIT	35 $\frac{15}{16}$	16	29 $\frac{9}{16}$	37 $\frac{5}{16}$	25 $\frac{1}{4}$	2 $\frac{3}{16}$	5	5	3 $\frac{1}{16}$		$\varnothing \frac{7}{8}$
2-4 SINGLE CIRCUIT	47 $\frac{3}{8}$	22	34 $\frac{3}{4}$	48 $\frac{3}{4}$	21 $\frac{9}{16}$	11 $\frac{1}{8}$	13	3 $\frac{3}{4}$	3 $\frac{3}{4}$	ROW 1	$\varnothing \frac{7}{8}$
5 SINGLE CIRCUIT	47 $\frac{3}{8}$	22	34 $\frac{3}{4}$	48 $\frac{3}{4}$	21 $\frac{9}{16}$	11 $\frac{1}{8}$	13	3 $\frac{3}{4}$	3 $\frac{3}{4}$	ROW 1	$\varnothing 1 \frac{1}{8}$
4-8 DUAL CIRCUIT	55 $\frac{3}{8}$	27	40 $\frac{3}{8}$	56 $\frac{3}{4}$	27 $\frac{1}{4}$	11 $\frac{1}{8}$	13	4 $\frac{1}{2}$	3 $\frac{3}{4}$	ROWS 1 & 2	$\varnothing 1 \frac{1}{8}$
10 DUAL CIRCUIT	70 $\frac{5}{8}$	29	45 $\frac{5}{16}$	72 $\frac{1}{16}$	32 $\frac{1}{8}$	11 $\frac{1}{8}$	14	4 $\frac{3}{16}$	3 $\frac{3}{4}$	ROWS 1 & 3	$\varnothing 1 \frac{3}{8}$
12-15 TRIPLE CIRCUIT	70 $\frac{5}{8}$	29	45 $\frac{5}{16}$	72 $\frac{1}{16}$	32 $\frac{1}{8}$	11 $\frac{1}{8}$	14	4 $\frac{3}{16}$	3 $\frac{3}{4}$	ROWS 1, 2 & 3	$\varnothing 1 \frac{3}{8}$

491 East Princess Street • York, Pennsylvania 17403 • 717-843-4311 • Toll Free 877-905-1111 • fax: 717-854-4462

www.unitedcoolair.com • uca@unitedcoolair.com

CA11097(A)(5)
04/14/09