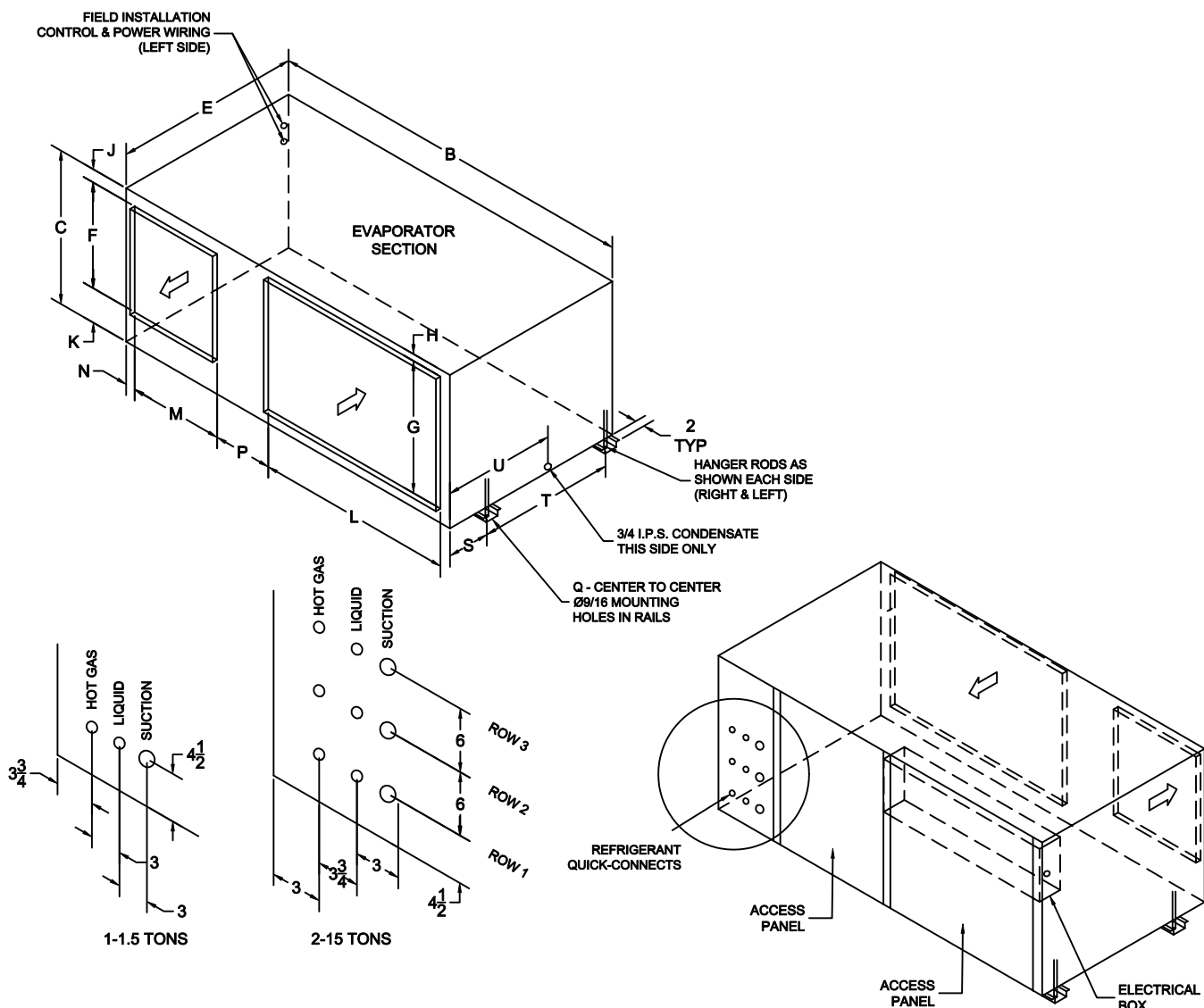


C-Series - Mirrored Evaporator Assembly w/ Rear Access



NOTE: MOUNTING RAIL HEIGHT AND DUCT FLANGE 1" TYP

TONS	B	C	E	F	G	H	J	K	L	M	N	P	Q	S	T	PIPING OUTLET LOCATIONS
1-1.5 SINGLE CIRCUIT	35 ¹⁵ / ₁₆	16	22 ¹ / ₁₆	12	12	1 ⁵ / ₁₆	1	3	16 ¹ / ₈	12	4 ¹ / ₁₆	2 ⁵ / ₁₆	37 ⁵ / ₁₆	4 ³ / ₄	15 ¹ / ₄	
2-5 SINGLE CIRCUIT	47 ³ / ₈	22	31 ⁹ / ₁₆	16	18	1 ⁵ / ₁₆	3 ³ / ₄	5 ¹ / ₄	24	16	3	2 ⁵ / ₁₆	48 ³ / ₄	7 ³ / ₈	22 ¹ / ₁₆	ROW 1
4-8 DUAL CIRCUIT	55 ³ / ₈	27	31 ³ / ₈	18	23	1 ⁵ / ₁₆	3 ⁵ / ₈	5 ³ / ₈	32	16	3	2 ⁵ / ₁₆	56 ³ / ₄	7 ⁵ / ₁₆	21 ¹ / ₁₆	ROWS 1 & 2
10 DUAL CIRCUIT	70 ⁵ / ₈	29	35 ⁷ / ₁₆	20	25	1 ⁵ / ₁₆	2 ¹ / ₂	6 ¹ / ₂	37 ⁹ / ₁₆	18	1 ⁷ / ₈	11 ³ / ₁₆	72 ¹ / ₁₆	7 ³ / ₈	25 ⁷ / ₈	ROWS 1 & 3
12-15 TRIPLE CIRCUIT	70 ⁵ / ₈	29	35 ⁷ / ₁₆	20	25	1 ⁵ / ₁₆	2 ¹ / ₂	6 ¹ / ₂	37 ⁹ / ₁₆	18	1 ⁷ / ₈	11 ³ / ₁₆	72 ¹ / ₁₆	7 ³ / ₈	25 ⁷ / ₈	ROWS 1, 2 & 3

491 East Princess Street • York, Pennsylvania 17403 • 717-843-4311 • Toll Free 877-905-1111 • fax: 717-854-4462

www.unitedcoolair.com • uca@unitedcoolair.com

Subject to change without notice.

CA11099(A)(11-1)
04/14/09