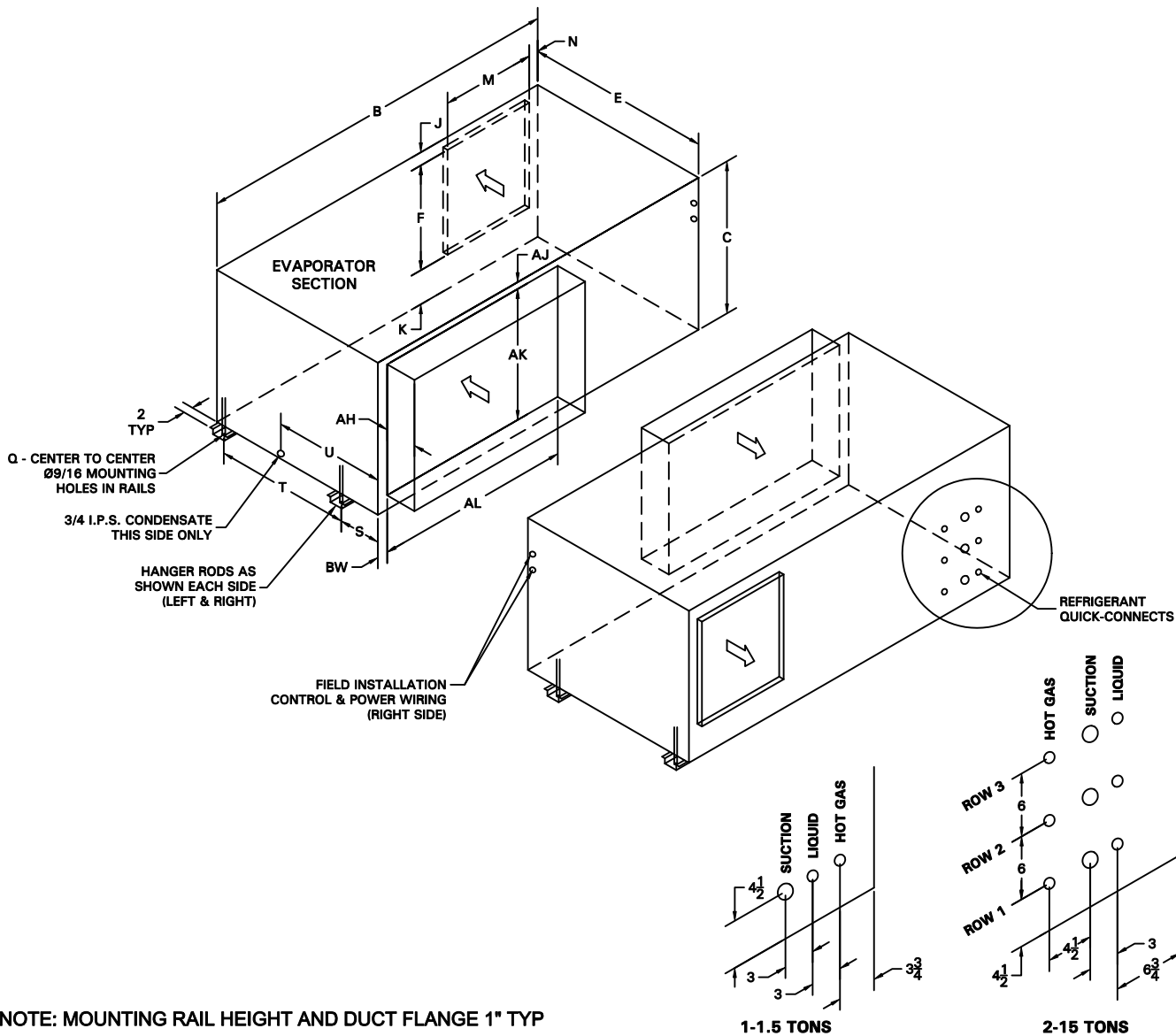


## C-Series - Evaporator Rear Discharge Assembly w/ External Filter Box



NOTE: MOUNTING RAIL HEIGHT AND DUCT FLANGE 1" TYP

TONS	B	C	E	F	J	K	M	N	Q	S	T	AH	AJ	AK	AL	BW	PIPING OUTLET LOCATIONS
1-1.5 SINGLE CIRCUIT	35 <sup>15</sup> / <sub>16</sub>	16	22 <sup>1</sup> / <sub>16</sub>	12	1	3	12	4 <sup>1</sup> / <sub>16</sub>	37 <sup>5</sup> / <sub>16</sub>	4 <sup>3</sup> / <sub>4</sub>	15 <sup>1</sup> / <sub>4</sub>	5	13 <sup>13</sup> / <sub>16</sub>	13 <sup>7</sup> / <sub>8</sub>	17 <sup>3</sup> / <sub>4</sub>	1 <sup>1</sup> / <sub>4</sub>	
2-5 SINGLE CIRCUIT	47 <sup>3</sup> / <sub>8</sub>	22	31 <sup>9</sup> / <sub>16</sub>	16	3 <sup>3</sup> / <sub>4</sub>	5 <sup>1</sup> / <sub>4</sub>	16	3	48 <sup>3</sup> / <sub>4</sub>	7 <sup>3</sup> / <sub>8</sub>	22 <sup>1</sup> / <sub>16</sub>	6	15 <sup>15</sup> / <sub>16</sub>	20 <sup>1</sup> / <sub>8</sub>	24 <sup>1</sup> / <sub>8</sub>	1 <sup>7</sup> / <sub>8</sub>	ROW 1
4-8 DUAL CIRCUIT	55 <sup>3</sup> / <sub>8</sub>	27	31 <sup>3</sup> / <sub>8</sub>	18	3 <sup>5</sup> / <sub>8</sub>	5 <sup>3</sup> / <sub>8</sub>	16	3	56 <sup>3</sup> / <sub>4</sub>	7 <sup>5</sup> / <sub>16</sub>	21 <sup>1</sup> / <sub>16</sub>	6	15 <sup>15</sup> / <sub>16</sub>	24 <sup>3</sup> / <sub>16</sub>	32 <sup>1</sup> / <sub>2</sub>	1 <sup>3</sup> / <sub>16</sub>	ROWS 1 & 2
10 DUAL CIRCUIT	70 <sup>5</sup> / <sub>8</sub>	29	35 <sup>7</sup> / <sub>16</sub>	20	2 <sup>1</sup> / <sub>2</sub>	6 <sup>1</sup> / <sub>2</sub>	18	1 <sup>7</sup> / <sub>8</sub>	72 <sup>1</sup> / <sub>16</sub>	7 <sup>3</sup> / <sub>8</sub>	25 <sup>7</sup> / <sub>8</sub>	6	1 <sup>3</sup> / <sub>16</sub>	25 <sup>3</sup> / <sub>8</sub>	40 <sup>1</sup> / <sub>8</sub>	1 <sup>7</sup> / <sub>8</sub>	ROWS 1 & 3
12-15 TRIPLE CIRCUIT	70 <sup>5</sup> / <sub>8</sub>	29	35 <sup>7</sup> / <sub>16</sub>	20	2 <sup>1</sup> / <sub>2</sub>	6 <sup>1</sup> / <sub>2</sub>	18	1 <sup>7</sup> / <sub>8</sub>	72 <sup>1</sup> / <sub>16</sub>	7 <sup>3</sup> / <sub>8</sub>	25 <sup>7</sup> / <sub>8</sub>	6	1 <sup>3</sup> / <sub>16</sub>	25 <sup>3</sup> / <sub>8</sub>	40 <sup>1</sup> / <sub>8</sub>	1 <sup>7</sup> / <sub>8</sub>	ROWS 1, 2 & 3

491 East Princess Street • York, Pennsylvania 17403 • 717-843-4311 • Toll Free 877-905-1111 • fax: 717-854-4462

www.unitedcoolair.com • uca@unitedcoolair.com

Subject to change without notice.

CA11101(A)(2)  
04/14/09