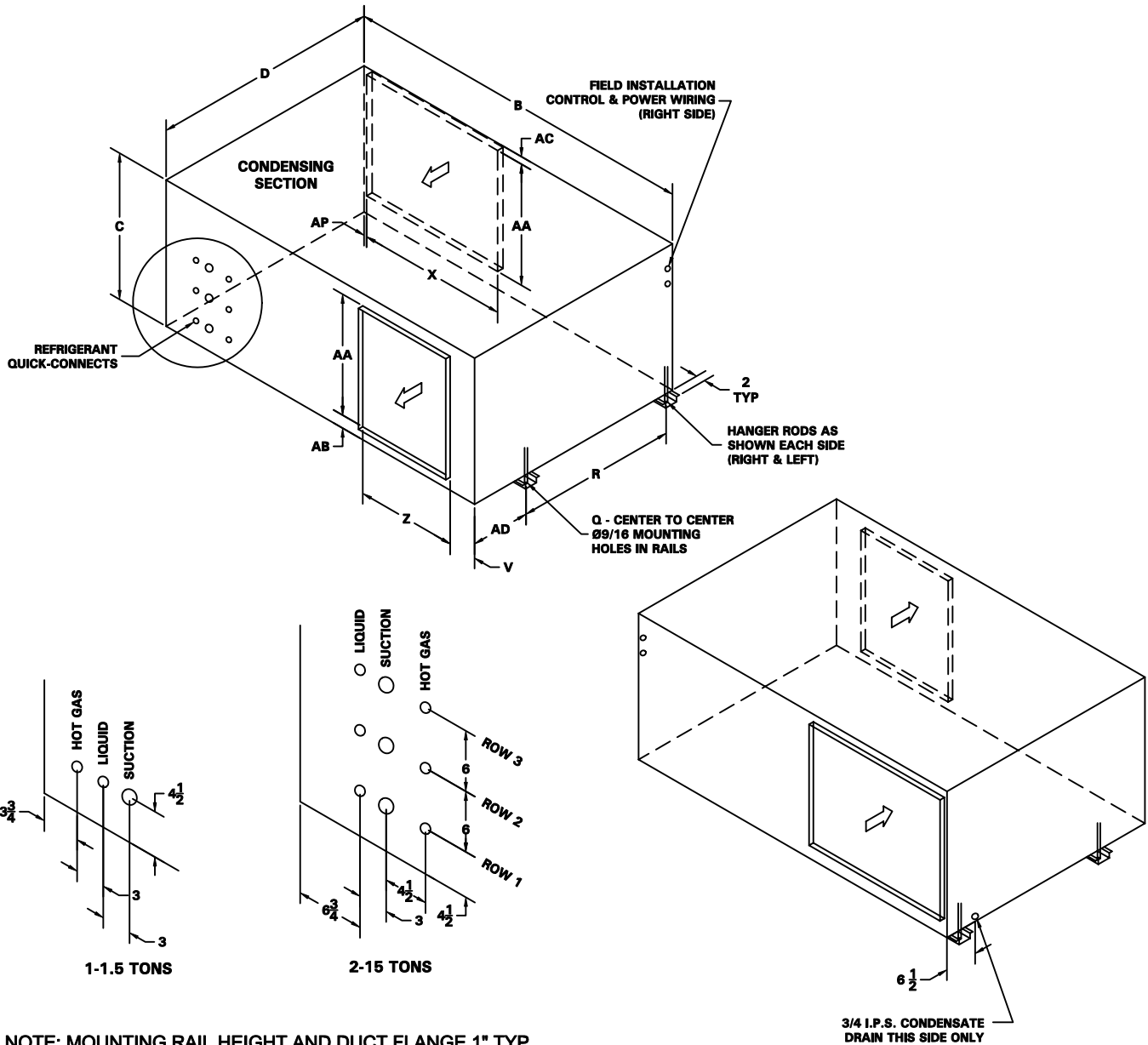


C-Series - Condenser Rear Discharge Assembly



NOTE: MOUNTING RAIL HEIGHT AND DUCT FLANGE 1" TYP

TONS	B	C	D	Q	R	V	X	Z	AA	AB	AC	AD	AP	PIPING OUTLET LOCATIONS
1-1.5 SINGLE CIRCUIT	35 ¹⁵ / ₁₆	16	29 ⁹ / ₁₆	37 ⁵ / ₁₆	25 ¹ / ₄	4 ¹⁵ / ₁₆	12	12 ¹ / ₁₆	12	2 ³ / ₄	1 ¹ / ₄	2 ³ / ₁₆	5 ⁵ / ₈	
2-5 SINGLE CIRCUIT	47 ³ / ₈	22	34 ³ / ₄	48 ³ / ₄	21 ⁹ / ₁₆	4 ¹¹ / ₁₆	16	16	16	4 ¹¹ / ₁₆	1 ³ / ₁₆	11 ¹ / ₈	1 ¹ / ₂	ROW 1
4-8 DUAL CIRCUIT	55 ³ / ₈	27	40 ³ / ₈	56 ³ / ₄	27 ¹ / ₄	3 ¹¹ / ₁₆	18	18	20	4 ¹¹ / ₁₆	2 ³ / ₁₆	11 ¹ / ₈	5 ⁵ / ₈	ROWS 1 & 2
10 DUAL CIRCUIT	70 ⁵ / ₈	29	45 ⁵ / ₁₆	72 ¹ / ₁₆	32 ¹ / ₈	5 ⁵ / ₈	30	20	24	3 ¹ / ₂	1 ¹ / ₂	11 ¹ / ₈	5 ⁵ / ₈	ROWS 1 & 3
12-15 TRIPLE CIRCUIT	70 ⁵ / ₈	29	45 ⁵ / ₁₆	72 ¹ / ₁₆	32 ¹ / ₈	5 ⁵ / ₈	30	20	24	3 ¹ / ₂	1 ¹ / ₂	11 ¹ / ₈	5 ⁵ / ₈	ROWS 1, 2 & 3

491 East Princess Street • York, Pennsylvania 17403 • 717-843-4311 • Toll Free 877-905-1111 • fax: 717-854-4462

www.unitedcoolair.com • uca@unitedcoolair.com

CA11104(A)(1)
04/14/09