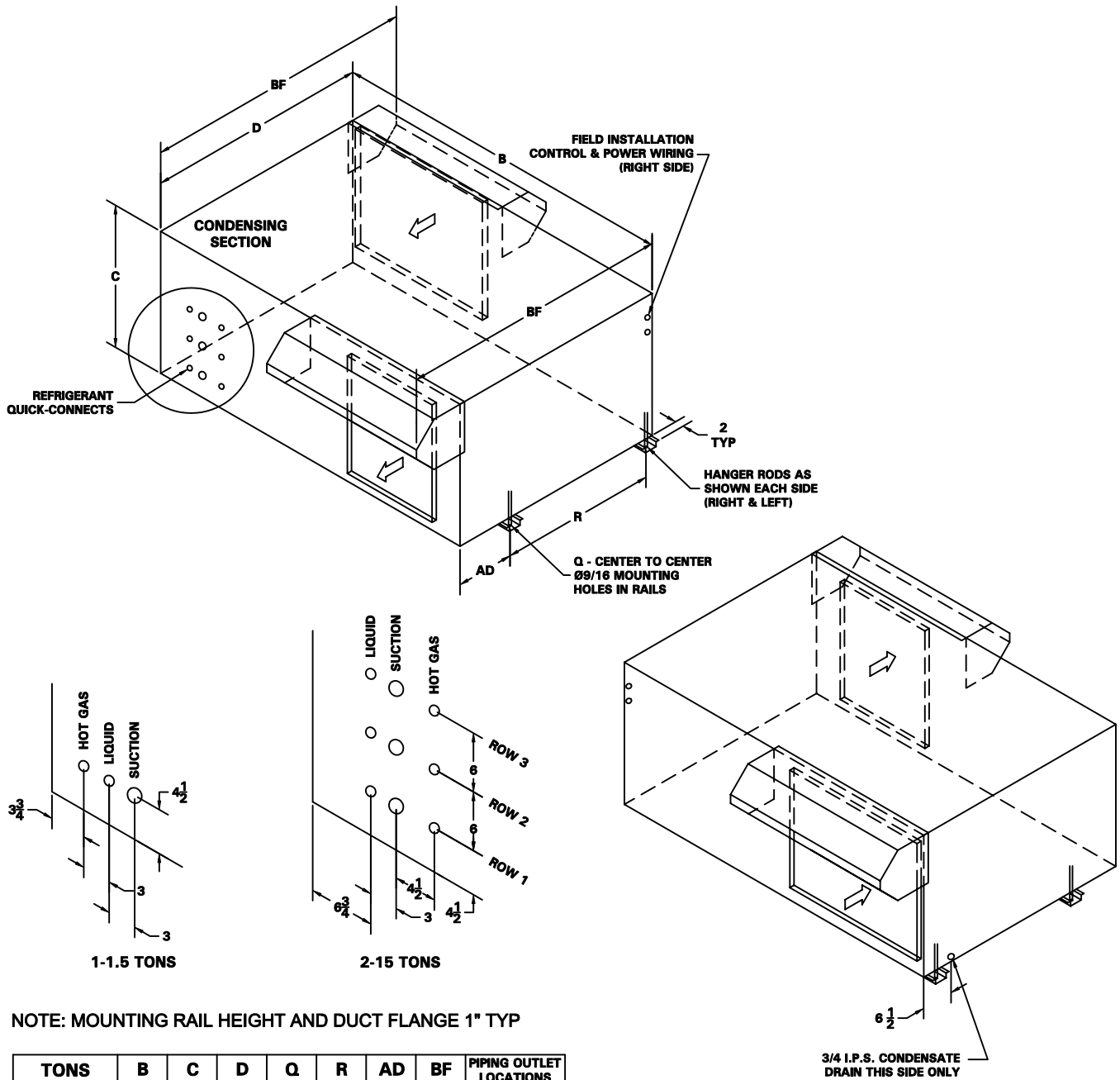


C-Series - Condenser Rear Discharge Assembly w/ 1/2 Rain Hood



NOTE: MOUNTING RAIL HEIGHT AND DUCT FLANGE 1" TYP

| TONS | B | C | D | Q | R | AD | BF | PIPING OUTLET LOCATIONS |
|-------------------------|----------------------------------|----|---------------------------------|---------------------------------|---------------------------------|--------------------------------|----------------------------------|-------------------------|
| 1-1.5 SINGLE CIRCUIT | 35 ¹⁵ / ₁₆ | 16 | 29 ⁹ / ₁₆ | 37 ⁵ / ₁₆ | 25 ¹ / ₄ | 2 ³ / ₁₆ | 39 ¹⁵ / ₁₆ | |
| 2-5 SINGLE CIRCUIT | 47 ³ / ₈ | 22 | 34 ³ / ₄ | 48 ³ / ₄ | 21 ⁹ / ₁₆ | 11 ¹ / ₈ | 45 ¹ / ₈ | ROW 1 |
| 4-8 DUAL CIRCUIT | 55 ³ / ₈ | 27 | 40 ³ / ₈ | 56 ³ / ₄ | 27 ¹ / ₄ | 11 ¹ / ₈ | 50 ³ / ₄ | ROWS 1 & 2 |
| 10 DUAL CIRCUIT | 70 ⁵ / ₈ | 29 | 45 ⁵ / ₁₆ | 72 ¹ / ₁₆ | 32 ¹ / ₈ | 11 ¹ / ₈ | 55 ⁹ / ₁₆ | ROWS 1 & 3 |
| 12-15 TRIPLE CIRCUIT | 70 ⁵ / ₈ | 29 | 45 ⁵ / ₁₆ | 72 ¹ / ₁₆ | 32 ¹ / ₈ | 11 ¹ / ₈ | 55 ⁹ / ₁₆ | ROWS 1, 2 & 3 |

491 East Princess Street • York, Pennsylvania 17403 • 717-843-4311 • Toll Free 877-905-1111 • fax: 717-854-4462

www.unitedcoolair.com • uca@unitedcoolair.com

Subject to change without notice.

CA11104(A)(7)
04/14/09