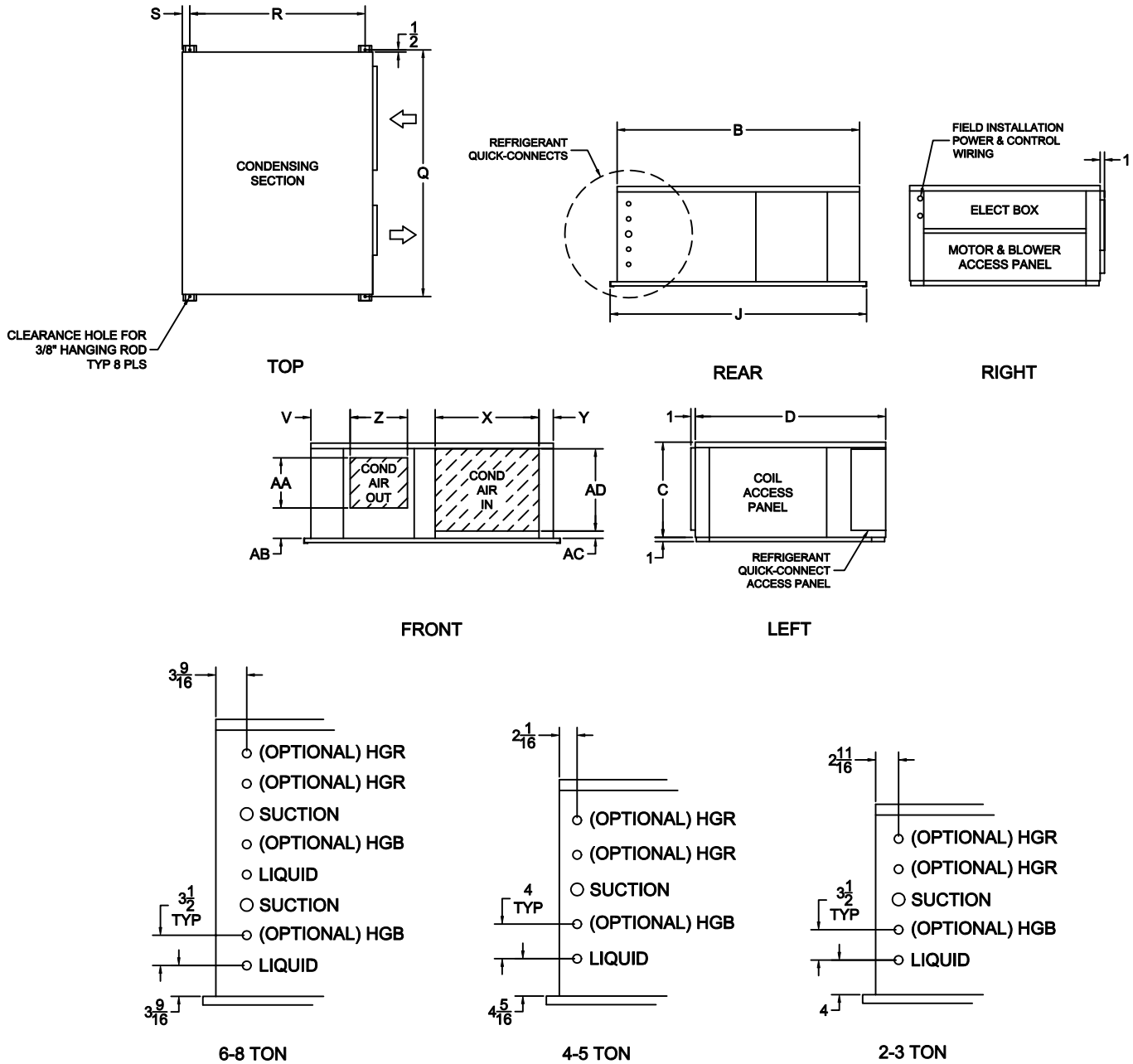




High-Efficiency C-Series Air-Cooled Condenser/Condensing Section



| TONS | B | C | D | J | Q | R | S | V | X | Y | Z | AA | AB | AC | AD |
|------|--------|----|----|--------|--------|--------|-------|-------|----|-------|----------|---------|-------|--------|----|
| 2-3 | 56 | 22 | 44 | 59 | 57 | 40 1/2 | 1 3/4 | 9 1/8 | 24 | 3 5/8 | 13 1/4 | 11 9/16 | 7 | 11 1/8 | 19 |
| 4-5 | 64 | 25 | 46 | 67 | 65 | 42 1/2 | 1 3/4 | 9 1/8 | 32 | 3 5/8 | 12 3/8 | 13 9/16 | 8 1/8 | 11 1/8 | 22 |
| 6-8 | 70 1/2 | 32 | 63 | 73 1/2 | 71 1/2 | 59 1/2 | 1 3/4 | 9 1/8 | 24 | 1 1/8 | 18 11/16 | 16 | 9 7/8 | 11 1/8 | 29 |

Service Clearance
 Left Side 36"
 Right Side 36"
 All Sizes 36"

491 East Princess Street • York, Pennsylvania 17403 • 717-843-4311 • Toll Free 877-905-1111 • fax: 717-854-4462
 www.unitedcoolair.com • uca@unitedcoolair.com

Subject to change without notice.