



491 East Princess Street • York, PA 17403
1-877-905-1111 • (717) 843-4311 • Fax (717) 854-4462
uca@unitedcoolair.com
www.unitedcoolair.com

MiniWall

TECHNICAL DATA MANUAL

**High Wall Fan Coil Units
1-3 Tons Cooling Only
Part of the MiniCool Single- or Multi-Split System**



MiniWall High Wall fan coils provide installation flexibility and offer the most effective zone cooling control for jobs where ducted systems are impractical or too costly to install. The fan coil units are designed to be easily installed to most interior walls.

Matched to United CoolAir's MiniCool single- or multi-split system, the MiniWall high wall fan coil is ideal for commercial office space, condominiums, retail shops, churches, restaurants, apartments and many more light commercial applications. MiniWall fan coils are available for cooling only operation and are a major component to the MiniCool commercial air conditioning system.

The United CoolAir MiniCool system is one of the most flexible air conditioning systems in the industry. The MiniCool system consists of a single- or multi-circuit, air-cooled or water-cooled indoor condensing section (also available for outdoor applications) with a variety of fan coil options. This unique system also allows the evaporator fan coil to be split up to 250 feet from the condensing unit.

The condensing unit can have up to three individual refrigerant circuits, each with up to a 3-ton capacity. Each circuit is individually controlled. The proven performance of United CoolAir systems ensures the kind of reliability and product quality that is expected in today's marketplace.

The MiniWall units have been designed for comfort cooling applications only. No data is available, nor performance guaranteed, for any other type of application.

MiniWall Unit Features:

- Matched with indoor air- or water-cooled condensing section
- Units can be installed up to 250 feet from the condensing unit
- Ultra-quiet operation
- Cooling only
- Wall-mount control (for individual control)
- Attractive durable design
- Cleanable filters
- Mounting plate provided for easy installation to most indoor walls
- Units are available with 208/230-1-60 power supply

Cabinet

The MiniWall high-wall front panel is built of durable plastic. The attractive ivory white color and design matches any interior décor.

Ultra-Quiet Operation

Designed to provide ultra-quiet operation, the 1-, 1-1/2- and 2-ton models have a dB level of 40 to 45. The 2-1/2 and 3-ton models have a dB rating of 38 to 48.

Evaporator Coil

The MiniWall evaporator coils are of hydrophilic coated aluminum slit-fins with inner grooved copper tubing, mechanically expanded to the aluminum fins to provide greater efficiency. The 1-, 1-1/2- and 2-ton units have three row coils with a face area of 2.46 square feet with 17 FPI. The 2-1/2- and 3-ton units have three row coils with a 3.54 square foot face area and 18 FPI.

Fan Motor

Single-fan motor is thermally protected.

Unit Control

The MiniWall fan coils are individually controlled.

Refrigerant Circuit

MiniWall fan coil units are equipped with a thermal expansion valve. Units are provided with a flare connection for easy piping connection and installation.

Air Filter

MiniWall fan coils are equipped with permanent, cleanable filters.

Condensing Unit

The MiniWall fan coil is matched to the flexible MiniCool indoor condensing unit and can be ordered in a single-, dual- or triple-circuit split system. Condensing section can be air- or water-cooled.

Limited Warranty

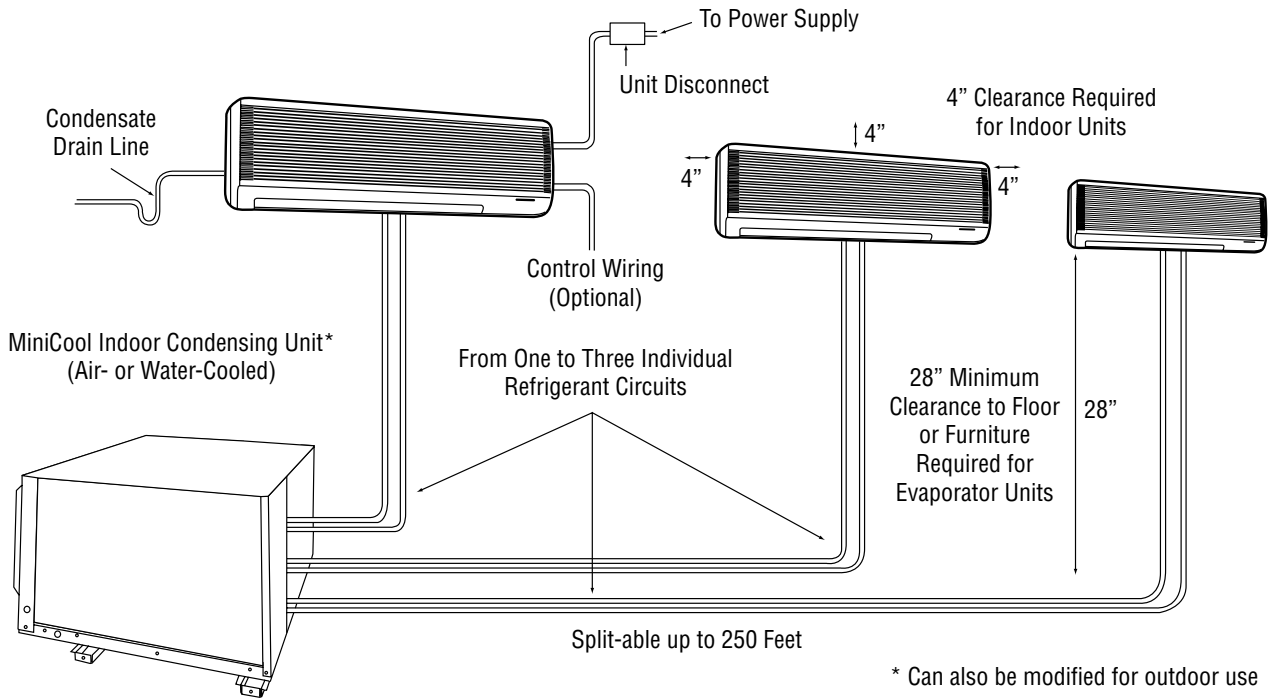
The MiniWall units are backed by a one-year limited warranty.

MiniWall Nomenclature

EXAMPLE: $\frac{ED}{a} \frac{3}{b} \frac{G}{c} \frac{1}{d}$

- a. "ED"
Ductless Cooling Only Evaporator
- b. "1", "1.5", "2", "2.5", "3"
Nominal Cooling Capacity, Tons
- c. "G"
Common to All
- d. "1"
208/230-1-60

MiniWall Typical Arrangement



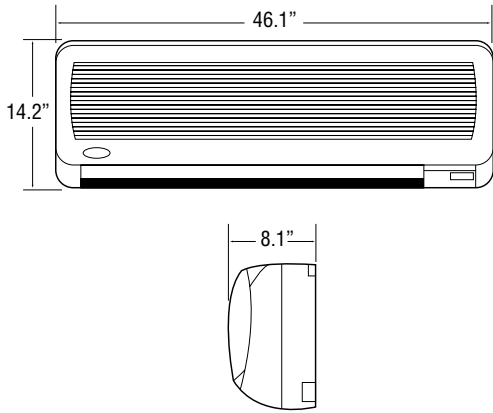
MiniWall High Wall Ductless Evaporators Specification Data

Indoor section(s) shall be high wall mounted type, factory assembled and wired. Wall mounting plate shall be included with each system. The evaporator coil shall be of draw-thru airflow design. The coil shall be hydrophilic-coated aluminum fins with drawn self-spacing collars. The coil shall be made with seamless, internally rifled copper tubes. Tubing shall be mechanically expanded to the aluminum fins. All evaporator coils shall be fed by an adjustable thermostatic expansion valve with external equalizer. A single blower wheel, statically and dynamically balanced, shall be attached to a single direct drive motor. Blower motor shall have internal thermal overload protection, permanent lubrication and multi-

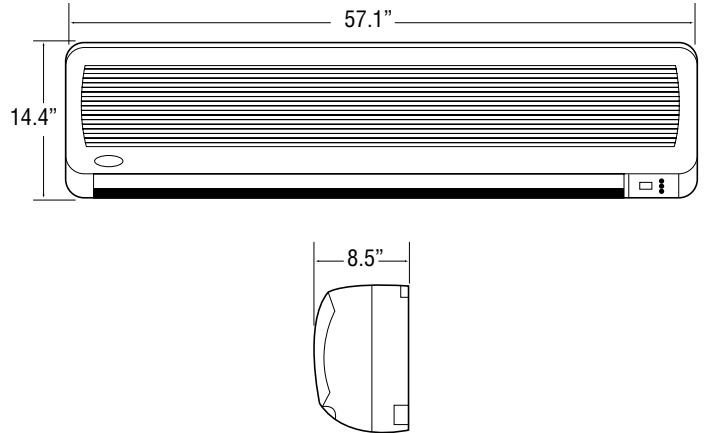
speed capability. Unit shall contain a factory installed condensate drain pan and drain hose. An anti-icing control shall be incorporated into the controls. Refrigerant line connections shall be flare type. Indoor section shall be shipped with a nitrogen holding charge. Units shall contain a knockout on side of the casing that allows the refrigerant lines to exit/enter. Unit shall have a manually adjusted louver for horizontal airflow direction. Unit shall be provided with a washable air filter. Air filter shall be removable without removing the indoor unit casing. The unit shall have its own 208/230-1-60 power supply. Each indoor unit shall be controlled individually.

MiniWall Dimensions (in inches)

1, 1.5 and 2 Ton Units

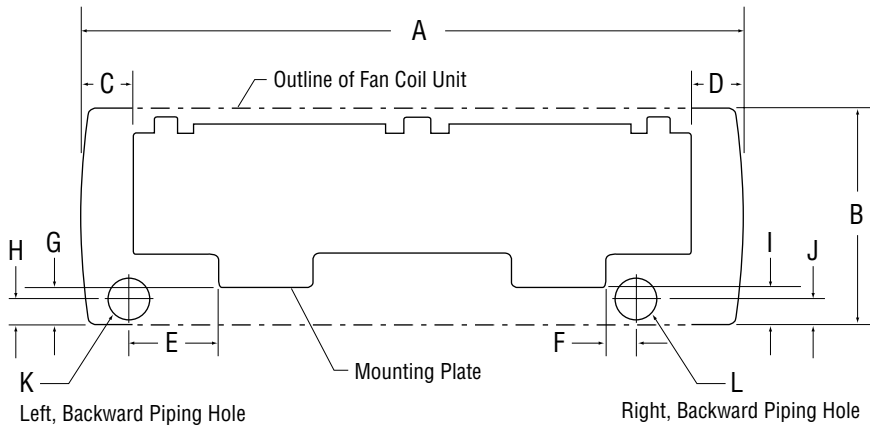


2.5 and 3 Ton Units



Plan Dimensions for Mounting Plate Installation

1. After a suitable place for installation has been selected, place the mounting plate horizontally on the wall. Make sure the alignment is horizontal. Use a plumb line if available.
2. Referring to the figure below, mark the location for the wall plugs and the hole for the pipings.



| | A | B | C | D | E | F | G | H | I | J | K | L |
|-----------------------|------|------|-----|-----|-----|-----|-----|-----|-----|-----|-----------|-----------|
| 1 thru 2 Tons | 46 | 14.2 | 3.8 | 3.8 | 6.1 | 2.4 | 2.4 | 1.7 | 2.4 | 1.8 | 2.76 Dia. | 2.76 Dia. |
| 2.5 and 3 Tons | 57.1 | 14.4 | 4.0 | 4.0 | 6.1 | 2.8 | 1.5 | 1.7 | 1.5 | 1.8 | 2.76 Dia. | 2.76 Dia. |

Dimensions are in inches

MiniWall Specifications

Matched with the MiniCool Indoor Condensing Section (Air- or Water-Cooled)



MiniCool Indoor Condensing Section



| Models | ED1G1 | ED1.5G1 | ED2G1 | ED2.5G1 | ED3G1 |
|-------------------------------------|--------------|------------|------------|------------|------------|
| Nominal Cooling Capacity Btu/hr (1) | 12,000 | 18,000 | 24,000 | 30,000 | 36,000 |
| Power Supply (V/Ph/Hz) | 208/230-1-60 | | | | |
| Running Current (Amps) | 0.15 | | | 0.26 | |
| Power Consumption (Watts) | 35 | | | 60 | |
| Maximum Fuse Size (Amps) | 5 | | | | |
| Pipe Connections | | | | | |
| Liquid | 3/8" Flare | | | | |
| Suction | 5/8" Flare | | | | |
| Condensate | 3/4" Pipe | | | | |
| CFM (2) | | | | | |
| High | 600 | 600 | 600 | 850 | 850 |
| Medium | 525 | 525 | 525 | 730 | 730 |
| Low | 450 | 450 | 450 | 650 | 650 |
| Refrigerant Type (3) | R-22 | | | | |
| Net Weight (lbs) | 37.4 | | | 54 | |

Notes

- (1) Cooling capacity based on 80 / 67 / 95 conditions
- (2) Recommended blower speed in bold
- (3) Unit is shipped with a nitrogen holding charge only

Notes



491 East Princess Street, York, PA 17403 Toll Free 1-877-905-1111 Phone (717) 843-4311 Fax (717) 854-4462
e-mail: uca@unitedcoolair.com www.unitedcoolair.com